

Bocinas Bluetooth » TS006BA

Music Always in Your Hand



Lighter, more compact.

Music world in your hand

Comfort grip ensured by compact size

Slimmer and lighter: 187g (excluding flip cover)

trimmed and polished with craftsmanship

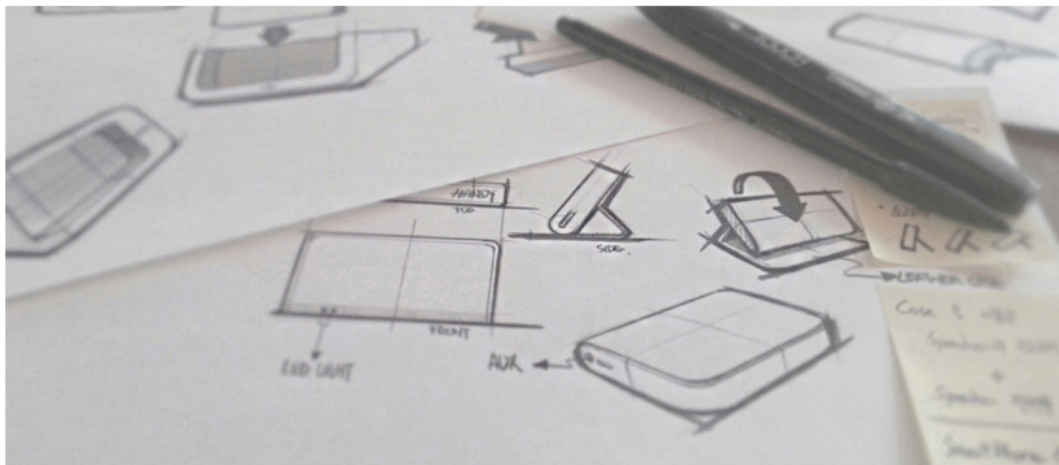




No ordinary circular or square design,

features simple volume with harmony of flat surfaces and curves, expanded straight lines and curved lines

This is a new type of Bluetooth speaker with a more analog feeling, using a stylish flip cover and pleasing body design with color and quality.

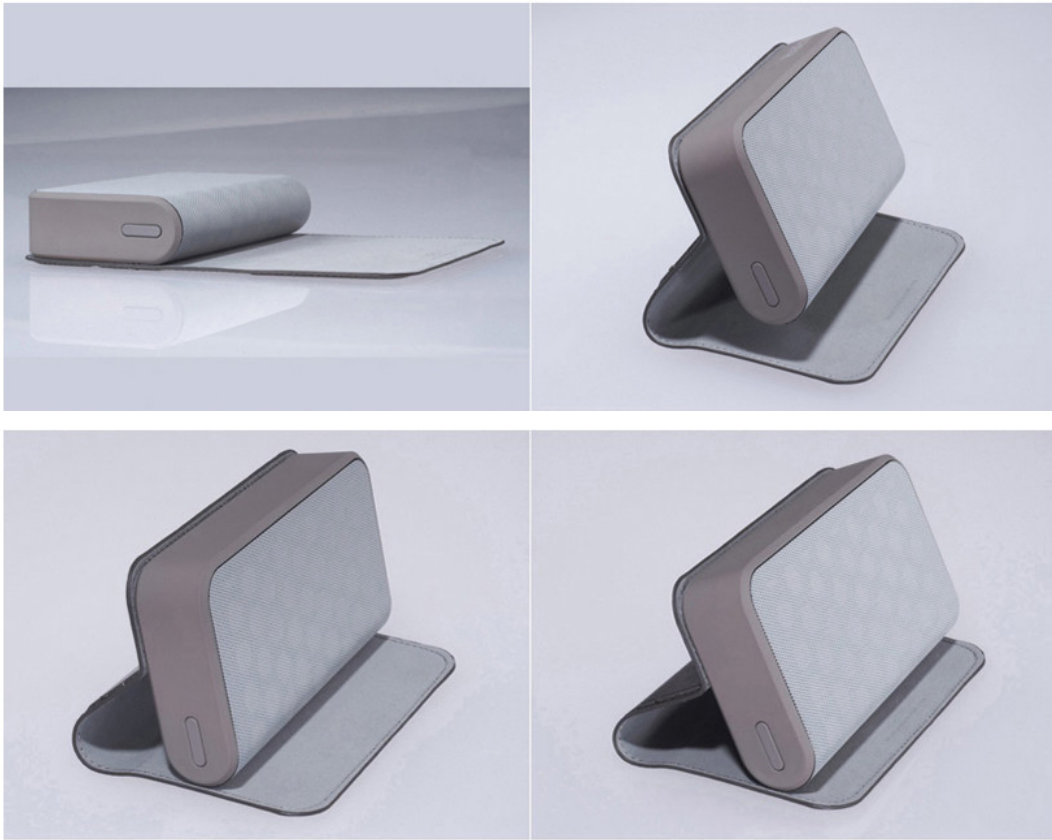






The stylish flip cover becomes a stand while the speaker is in use
You can adjust it to **various angles** depending on your location.

The magnetic cover naturally snaps shut when closed, and the soft leather,
luxurious stitching and edge coating complete the design.



While it fits in your hand,
the sound will fill a room.

Double neodymium magnets are used for the 2-channel 3.6 cm full range driver to maximize system driving power and generate 90 dB of powerful stereo sound.



An intuitive bass reflex system

Unlike other compact sound system, full-range driver with a **exclusively designed paper cone** and double magnet provides rich and clear sounds made by optimized amp tuned with 3Wx2, 0.1% THD.



Featuring a high-capacity Li-ion battery

Charge once for 10 or more hours of play.



Super fast recharging technology takes only 3 hours to full through a Micro-B USB cable. AUX input for PCs and MP3 players.

Anyone can easily use this speaker thanks to its **simple** button controls and easy Bluetooth pairing.



Pairing and operation

Turning on

Hold the power button for 2 seconds until the white LED flashes.
(There is a startup sound, and the white LED turns on and starts to flash slowly.)

Turning off

Press the power button twice (double-click).
(There is a shutdown sound, and the white LED turns off.)

Pairing mode activation

Hold the power button for 3 seconds while power is on.
(There is a pairing standby mode sound, and the white LED flashes quickly.)

LED indicator

- Charging in progress/complete:
red LED on / red LED flashing
- Low battery warning: red LED flashes 10 times
- Lost device connection: white LED flashes slowly
- Awaiting pairing: white LED flashes quickly
- Pairing complete: white LED on

Pairing

Activate Bluetooth on a Bluetooth device and run "device search" or "find". Select "Handy" to pair.
(When pairing is complete, the white LED stays on.)

Ending pairing

Turn off the power of the speaker or deactivate Bluetooth on your Bluetooth device.

Reconnecting

When power turns on, the speaker automatically connects to the last device it was connected.

SPEC

Product Name	Wireless stereo Bluetooth audio system
Model Name	TS006BA
Size (Excluding cover)	124 x 25 x 68mm (W x D x H)
Weight (Excluding cover)	187g (Excluding cover) / 210g (Including cover)
Power	3W x 2 (0.1% THD, 3.7V Battery)
Output Level	90dB @0.5m
Speakers	1.5" Full Range Neodymium x 2
Bluetooth	V2.1 EDR , Class 2, A2DP
Terminal	Micro-B USB (Charging) / 3.5mm Aux In
Power Input	5V DC / Max. 1.0A
Battery	Li-Ion Battery 3.7V, 750mAh

Speaker unit, user manual, and USB cable.
AUX cable and adapter is not included.

My personal or business trip, together with a long-standing friend

Handy size, light weight
fit to any pocket or travel bag
Forget chargers. Forget cables.
Standard chargers for most smartphones are enough.

[Acerca de TS](#)[Contáctanos](#)[Distribuidores](#)[¿Dónde comprar?](#)[Soporte](#)

[Aviso legal](#) | [Política de privacidad](#) | [Mapa del sitio](#)

All Contents Copyright© 2013 Toshiba Samsung Storage Technology Korea Co., Ltd. Optical Disc Drive